

V1.0GO2.20.01.26

ROAD ANGEL™

HALO GO 2



USER MANUAL



**Need Help? +44 (0)330 320 3030**

RoadAngelGroup.com

# What's in the box



Dash Camera



3M Sticker



Trim Tool



USB Power Adapter



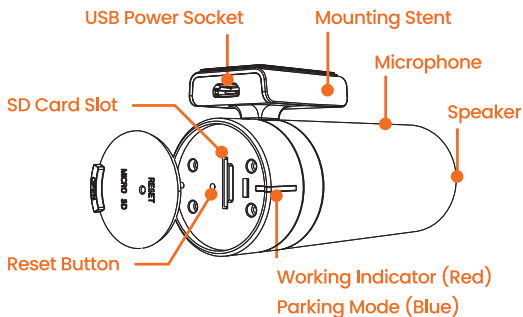
Quick Start Guide



Power Cable

**ROAD ANGEL™**

# Configuration and Button Instructions



## LED Indicator instructions

Red	Normal recording	Flashing
	Power on	Solid light
Blue	Parking mode	Flashing
	USB data transfer	Solid light
Purple	Micro SD card error	Flashing
	Updating	Solid light

## Mic Instruction

Status	Voice prompt
Power On	Greeting prompt
Update	Updating & success, maintain power
Shutdown	Overheat shutdown, auto shutdown
Card Format	initialisation, maintain power, ensure card is not removed
Card Error	SD Card error

# Download the app



<https://l.ead.me/bcpE4P>

Download the Road Angel App from the Google Playstore or Apple Appstore using the above QR code. Alternatively navigate to your preferred Appstore and search for Road Angel Halo. You need to download the Road Angel App to use the Dash Camera.



Download on the  
**App Store**

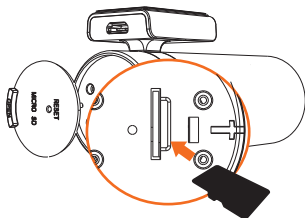


ANDROID APP ON

**Google play**

# ROAD ANGEL<sup>TM</sup>

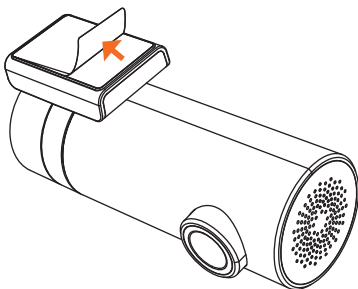
# Getting Started <sup>1</sup>



1. Power off you car engine.
2. Insert the SD Card into the SD Slot

- The Halo Go supports up to 256Gb Class 10 SD Cards.
- For 64GB/256GB SD cards, please beforehand format through Halo App or else the card can't be read properly.

3. Mount the Halo Go to your windscreen by peeling off the protective film from the 3M Sticky Pad and place behind the rear-view mirror.

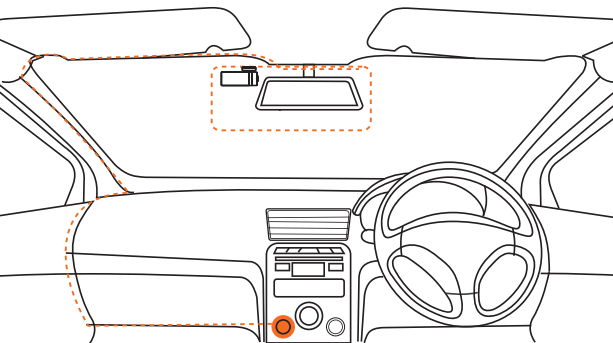


4. Following the wire-running diagram on the previous page plug the USB adapter into the cars power outlet.

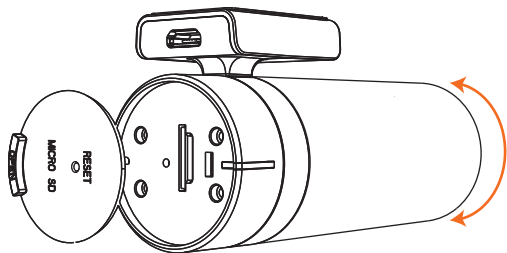
Do not remove SD Cards when the Camera is on. The SD Card will need formatting with the device before first use.

Ensure the Halo Go does not obstruct the view of the driver.

## Getting Started <sup>2</sup>



5. Plug the USB cable into the back of the power adapter and the USB into the Halo Go.
6. Turn on the car's ignition and check everything is working correctly. Halo Go will automatically boot up with a welcoming voice alert.

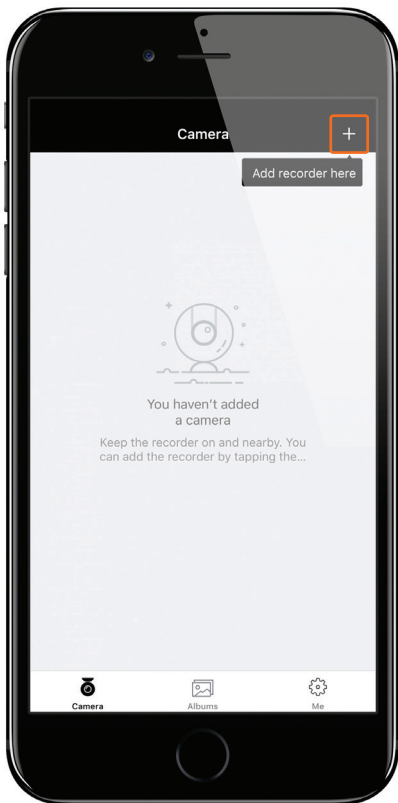


7. Adjust the angle of the lens by rotating the body of the Halo Go.

A constant/permanent power source is required for parking mode to operate correctly.

Hardwiring kits and accessories are available separately.

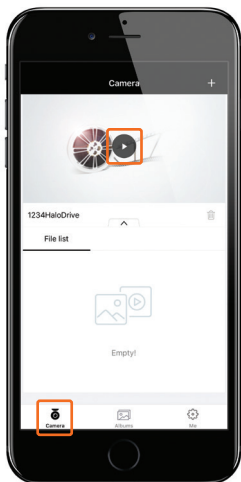
# Wi-Fi Setup



Launch the App. Press the '+' icon in the top right corner. Then follow the instructions that will be shown in the App on how to connect the device via Wi-Fi. Once connected successfully you may return to the Halo App.

- The default Wi-Fi password is set to '1234567890'.

# Live Preview



To preview the dash cams currently recording footage, select the Camera tab at the bottom of the app and press the Play icon on the screen. This will display a real time view of the live dash cam footage.

Here you will see 3 icons that allow you to download, take a picture or enter full screen mode. The download tab lets you download an image taken or download footage, this will take you to the download window ready to create a clip.





# Photo Editing



After you have selected the photo from the Album page you have several options.

Top right button saves photos to the phones photo album.

Bottom left magic wand opens the photo editing mode. Middle trash can deletes the photo and bottom right allows you to share the photo.

The photo editing screen allows you to add text captions, video frames, contrast settings and choose from 17 photo filters.

When you are finished simply save your file.



# Video Editing <sup>1</sup>



After you have selected a video from the Album page you have several options. The bottom controls change playback options. The top right buttons allow you to share the video and open the side menu.



From the side menu you can delete the video, 'Save' the video to your phones photo/video album or open the 'Video Editing' mode.

## Video Editing <sup>2</sup>



The video editing screen lets you crop the length of the selected video and choose video quality. Once done press the 'Next' button at the bottom to continue.

From the next 'Video Editing' screen you can change the sound options for the video. You can toggle the sound on and off or you can choose from 7 music tracks.

When you are finished simply 'Save' your file.



# Video Playback



To playback footage, slide the scroll bar which will show you a thumbnail of the moment about to be viewed along with the date and time.



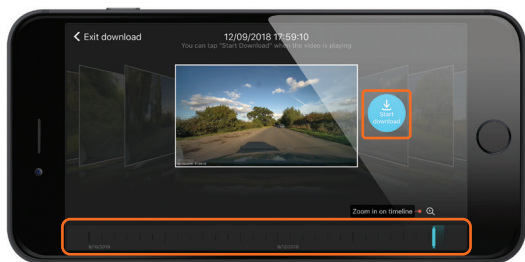
You can rotate your phone to enhance the experience and see more options. You will also be able to download footage. You can also view Live preview, photo viewing or video viewing here.

**ROAD ANGEL™**

# Download Footage <sup>1</sup>



When in the Landscape video Playback mode, select the Download icon on the right of the screen which will take you to the download screen.



To create a clip of what has been recorded, slide the viewing bar to the left to scroll backwards in time and to the right to go forwards. A thumbnail of what moment you are on with a date and time will be displayed to help select the right clip.

Press 'Start Download' on the right of the thumbnail of the footage, the footage will then begin playing back what is being downloaded in realtime.

## Download Footage <sup>2</sup>

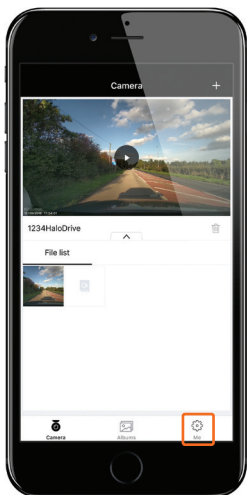


When you are happy with the length of the video clip, press 'complete download'. While downloading, you may not have connection to the internet.

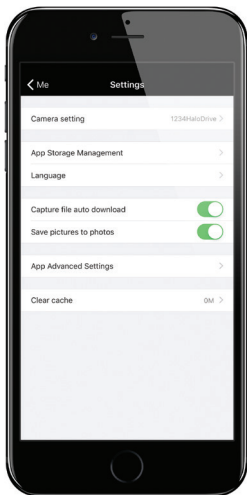


The screen will now show you a thumbnail of the downloaded video clip, giving you the option to 'share' or 'delete' the video clip, the video clip is stored in the app album tab.

# Camera Settings



When connected to the camera, press the Settings icon in the bottom right to access the general settings of the dash cam.



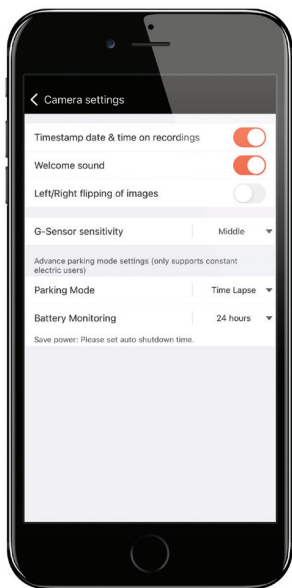
## Advanced Camera Settings

More settings can be found within the Advance camera settings

# Parking Mode

The Halo Go's parking mode records video footage even when your vehicle is parked. The parking mode feature has several settings that can be changed.

In the 'Advanced Camera Settings' screen you can adjust the Parking Mode G-Sensor sensitivity, set what type of video format you want Parking Mode to be recorded in and set the duration of the Parking Mode recording limit.



The Halo Go requires a constant power source for parking mode function.

Hardwiring Kits can be purchased separately.



# Specifications & References

## MAIN HARDWARE

Recording	1080P@30fps HD Loop Recording 720P@30fps HD Loop Recording
Lens	4 Layer Optics 130° Viewing Angle - f/2.2 Aperture
Image Sensor	Omnivision OV2735 CMOS Image Sensor
Processor	Hisilicon Hi3516E

## TECHNICAL PARAMETERS

Storage	Up to 256GB Micro SD Class 10
Video Resolution	1080P
Image Resolution	4 Million Pixels
Connectivity	Wi-Fi 2.4GHz

- Apps and camera firmware continue to update.
- Store temperatures: -20°C - 70°C
- Foreign objects on the lens will seriously reduce image quality. Clean the lens using a soft non-static cloth. Do not clean using abrasive materials and/or chemicals.
- In the unlikely event of a problem with the device, repairs must be undertaken by a professional.
- Do not dispose of this item in household refuse, please use dedicated electrical recycling widely available.

**FCC STATEMENT** This device complies with Part 15 of the FCC Rules. Operation is subject to the following 2 conditions: (1) This device may not cause harmful interference, and (2) Must accept any interference received, Incl. interference that may cause undesired operation.

**WARNING** Changes or modifications not expressly approved by the partly responsible for compliance could void the user's authority to operate the equipment.

**NOTE** This equipment has been tested and found to comply with the limits for a Class B digital device. These limits are designed to provide reasonable protection against harmful interference in a residential installation. This equipment generates uses and can radiate radio frequency energy and, if not installed and used in accordance with the instructions, may cause harmful interference to radio communications. However, there is no guarantee that interference will occur in a particular installation. If this equipment does cause harmful interference to radio or TV reception, which can be determined by turning the equipment off and on, the user is encouraged to try to correct the interference by one or more of the following measures: (1) Reorient or relocate the receiving antenna. (2) increase the separation between the equipment and receiver. (3) Connect the equipment into an outlet on a circuit different from that which the receiver is connected. (4) Consult the dealer or an experienced radio/TV technician for help.

# FAQ's

## VIDEO RECORDING

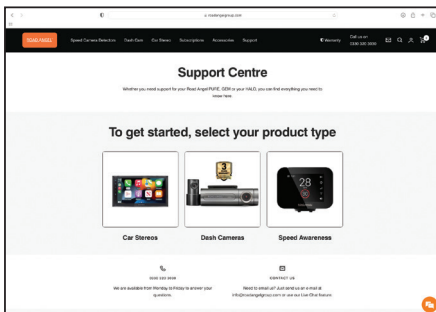
- Q1: Shall I keep the Halo Go connected with my Smart phone when it is working?
- A1: The Halo Go starts to record video automatically when the car is started without needing to connect to your phone. However, if they are connected, you can preview, download and playback the videos from the Halo App on your Smart phone.
- Q2: Why are some of the Halo Go video recordings missing?
- A2: Make sure the Halo App and the Halo Go firmware's are the latest version. If there is a 'Storage exception' notification, this means the SD card is corrupted and needs to be replaced.
- Q3: Why is the image unclear on my Smart phone?
- A3: The video downloaded to your Smart phone is compressed, you can review HD recordings via a PC in MP4 format.

## WI-FI AND APP CONNECTIVITY

- Q1: How do I change the Wi-Fi name and password of the Halo Go?
- A1: Make sure your Halo Go is connected to the App. Then go to Me > Settings > Camera Settings > Camera Name (changes your Wi-Fi name), Camera Password (changes your Wi-Fi password).
- Q2: Why is my Wi-Fi always disconnected?
- A2: Go to Settings > Wi-Fi > Menu > Advanced > Disable 'Scanning always available'. If 'Scanning always available' is checked, make sure your Smart phone is near the Halo Go.
- Q3: After connection to the Halo Go Wi-Fi, why can't my Android Smart phone access it's Mobile Data?
- A3: Due to the settings of Android Smart phones, Mobile Data is no longer available when it's connected to the Wi-Fi of the Halo Go.

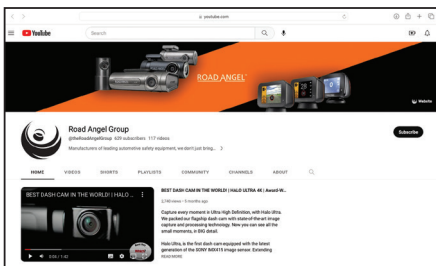
# Need Help?

## Support page



<https://www.roadangelgroup.com/pages/support>

## Youtube channel



<https://www.roadangelgroup.com/pages/support>

# ROAD ANGEL™

# Pure One



UK's Most Trusted  
Road Safety Assistant

RoadAngelGroup.com