



## Introduction

Thank you for choosing the Pure One, From Road Angel. As our roads become busier, more congested, and more regulated, staying alert to road and traffic conditions is a growing challenge to all drivers.

Even the most attentive and conscientious driver can have a momentary lapse of concentration or even get distracted which could lead to an accident or a speed fine with penalty points.

The Road Angel Pure One is an IOT-based subscription product. There are a variety of subscription options available for you to choose from.

You can find a subscription package suitable for you via our website [roadangelgroup.com](http://roadangelgroup.com), over the phone or via our purpose-built companion App.

You can download the app here and see the options.

The safety of you and your passenger is our prime consideration and we trust that for all the miles you drive, your Road Angel Pure One will enhance the safety and enjoyment of your journeys.

We are pleased to welcome you or welcome you back as a Valued customer and hope you are delighted with your new Road Angel Pure One!

Subscription Options:

Essential	Advanced	Complete connected+
1 YEAR LIVE DATA ONLY	1 YEAR LIVE DATA SMART MOTORWAY & OTA UPDATES	1 YEAR LIVE DATA SMART MOTORWAY, OTA UPDATES, UK LIVE ROAD SPEED LIBRARY & LIFETIME WARRANTY*
£99.99 PER YEAR	£149.99 PER YEAR	£199.99 PER YEAR
OR 12 MONTHLY PAYMENTS OF £9.99	OR 12 MONTHLY PAYMENTS OF £14.99	OR 12 MONTHLY PAYMENTS OF £19.99

\*Product lifetime only and only with active specific subscription.  
This product requires a data subscription available from [www.roadangelgroup.com](http://www.roadangelgroup.com).  
Before, subscription and installation please your vehicle's specification and compatibility for GPS signal.

## Contents

Introduction.....	2
Contents page.....	3
What's in the box .....	4
Getting started.....	5-7
Register your Pure One.....	8-9
Firmware and data update .....	10
Subscriptions .....	11-12
Offers .....	13
Installation .....	14
Full user guide .....	15

## What's in the box



## Getting started<sup>1</sup>



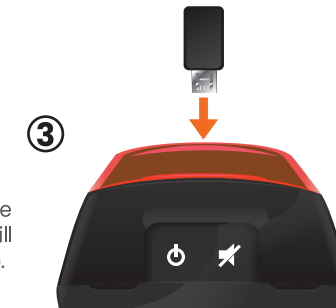
Plug the Pure One into a High-power outlet using the accessories provided.



The Device is designed to be intuitive, please follow the on-screen step on both the Device and the App Screen.

## Getting started<sup>2</sup>

This Manual was made using Firmware 2.11.3.15  
Some changes may not be reflected.



Upon connection of the power, the Pure One will automatically start up.

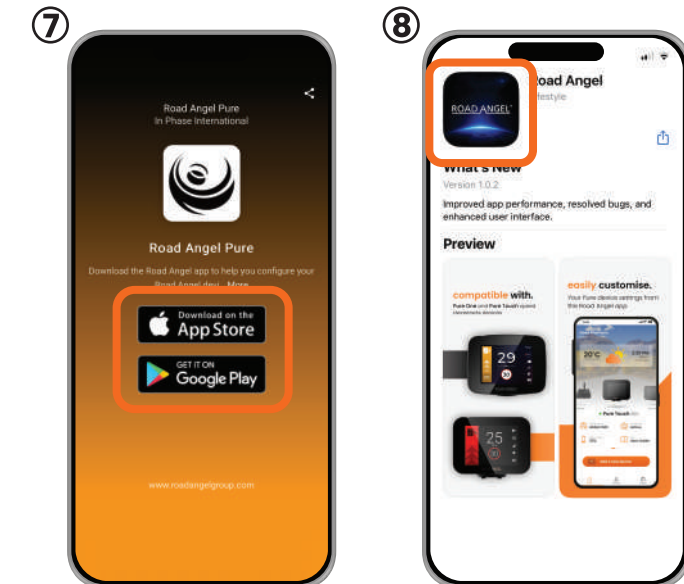


Follow the on-screen instructions

## Getting started<sup>3</sup>



Download the app by scanning the QR Code or from your Smart Device's App Store



## Register your Pure One<sup>1</sup>

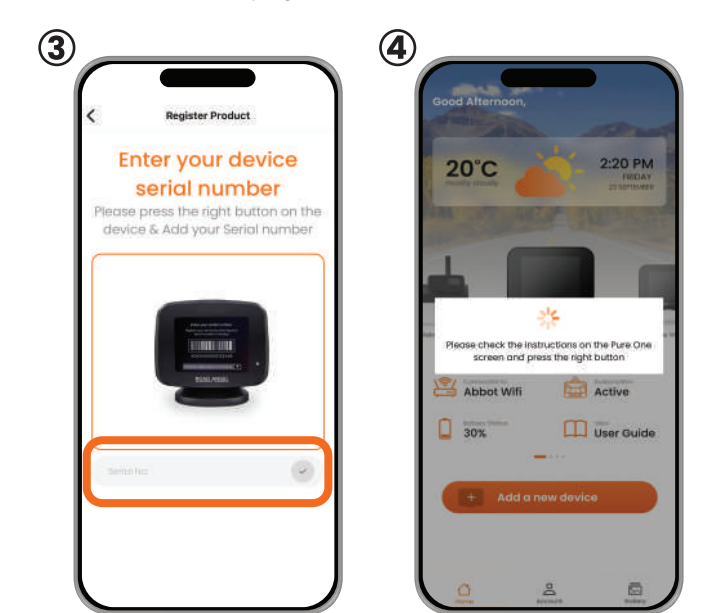
Open the app and sign in to your Road Angel account or create a new account.



Your warranty will automatically be registered as part of this process.

## Register your Pure One<sup>2</sup>

Enter your Pure One's Serial Number in the App on your Smartphone and Press the top right button on the Pure One to continue.







This is a subscription-based product, for more info please go to [www.roadangelgroup.com/subscription](http://www.roadangelgroup.com/subscription) or call 0330 320 3030

Please check vehicle compatibility before installation and subscribing.

Vehicle specification and driving variables may cause interference with in-built detection.

Designed, engineered and manufactured by Road Angel Group  
DB House, Rani Drive, Nottingham, NG5 1RF, United Kingdom  
[RoadAngelGroup.co.uk](http://RoadAngelGroup.co.uk)



Product names, logos, brands, and other trademarks featured or referred to within Road Angel Group products and services are the property of their respective trademark holders. These trademarks belong to their respective holders and are used under license within Road Angel Group products. They do not sponsor or endorse our materials. The "Apple" name, the Apple logo, iPhone, and iPad are trademarks of Apple Inc., registered in the U.S. and other countries. App Store is a service mark of Apple Inc. The "Android" name and the Android logo are trademarks of Google LLC. All rights reserved.

## Firmware and data update

The Pure One will now check for updated firmware.



Your Pure One will download a new firmware if available.

Your Pure One will prompt you once it has updated successfully.

Your Pure One unit will also look to update and download the Road Network Data to keep you protected.

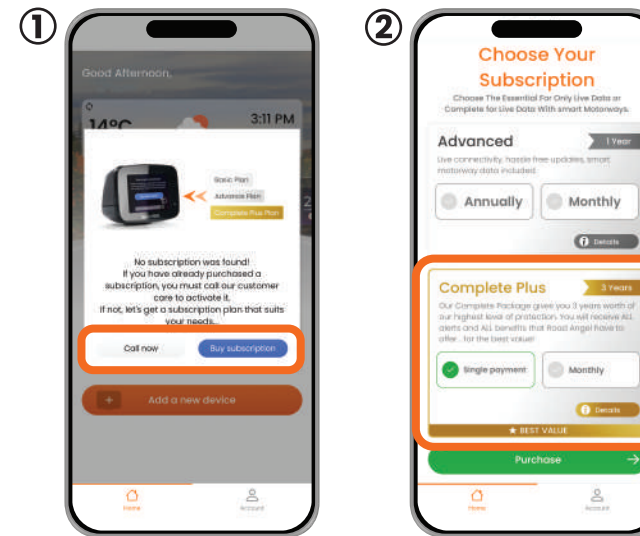


Your Pure One will download new roadwork data if available.

Your Pure One will prompt you once it has updated successfully.

## Subscriptions<sup>1</sup>

The Pure One will automatically look for your subscription and will need an active plan to continue.



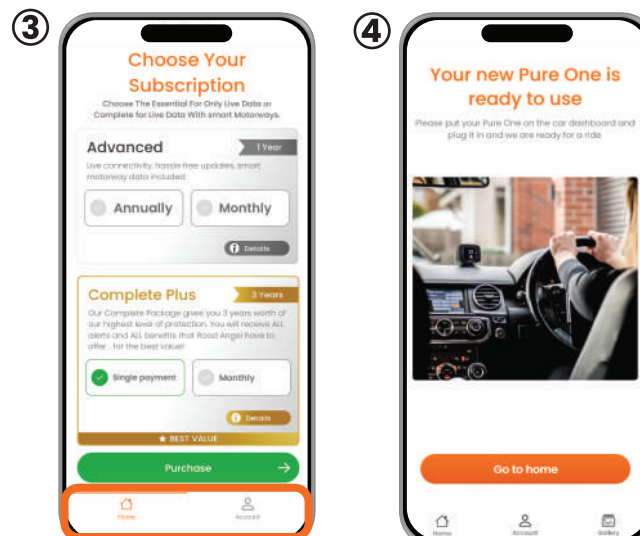
Open the subscription plan options in the app.

Choose a subscription plan in the app.

<sup>1</sup>Product lifetime only and only with active specific subscription

## Subscriptions<sup>2</sup>

Once a subscription is purchased the Pure One will automatically recognise the plan and update.



**Note: Please be aware that once activated the device subscription is non-refundable. If not activated you have a 14-day cooling off period. If you purchased a subscription at the time of the order or via our website, you will need to call Road Angel on 0330 320 3030 to get this activated.**

<sup>2</sup>Product lifetime only and only with active specific subscription

## Don't miss out!

Take advantage of this exclusive offer to compliment your Pure One purchase.



Scan below to available accessories and products quoting code **PUREONE20AD** at checkout



<https://lead.me/beYhRM>

## Installation available



Professional installation available

Call Road Angel on **0330 320 3030** to find out more

## Scan for full user guide

By scanning the QR code below using your Smart Phone's Camera will give you access to a more indepth online user guide.



<https://lead.me/beVQza>

## ROAD ANGEL™

## PURE ONE



\*Product lifetime only and only with active specific subscription

QUICK START GUIDE

ROAD ANGEL™

ROAD ANGEL™

ROAD ANGEL™

ROAD ANGEL™

ROAD ANGEL™

ROAD ANGEL™